



**SUBARU**

Part number  
Numéro de pièce

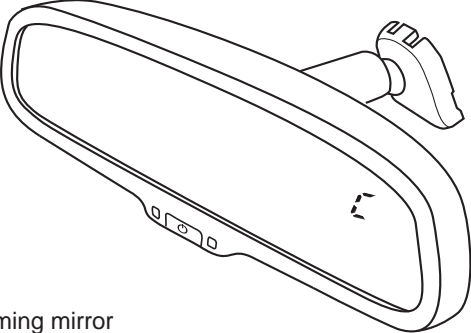
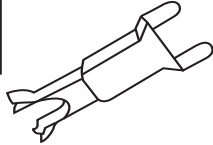


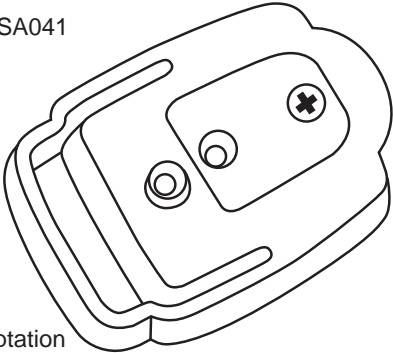
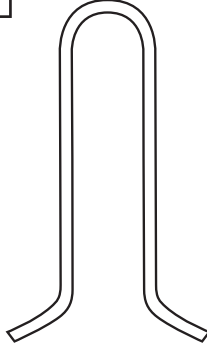
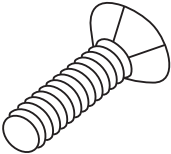
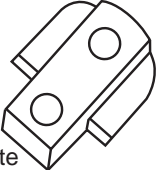
**H501SCA001**

Installation instructions  
Instructions d'installatiion

Description: Auto dimming mirror with compass  
Description: Rétroviseur antiéblouissement avec boussole

Kit contents

Contenu de la trousse

<p><b>A</b></p>  <p>Auto dimming mirror Tetroviseur antiéblouissement</p>	<p><b>B</b></p>  <p>Wire harness cover Couvre-faisceau de câblage</p> <p><b>D</b></p>  <p>Mirror user guide Manuel d'utilisation du rétroviseur</p>	<p><b>C</b></p>  <p>Wire harness Faisceau de câblage</p>
<p><b>E</b></p> <p><b>ADDITIONAL REQUIREMENTS: AUTRES EXIGENCES:</b></p> <p>PT# H5015SA041</p>  <p>Adapter plate Plaque d'adaptation</p>	<p><b>F</b></p>  <p>U-pin Broche en U</p>	<p><b>G</b></p>  <p>Screw Vis 2X</p> <p><b>H</b></p>  <p>Screw plate Filière</p>

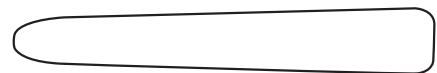
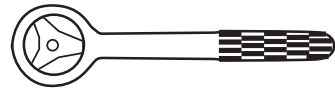
Tools required  
Outils requis



T-20



10 mm



Panel removal tool  
Outil de dépose du panneau

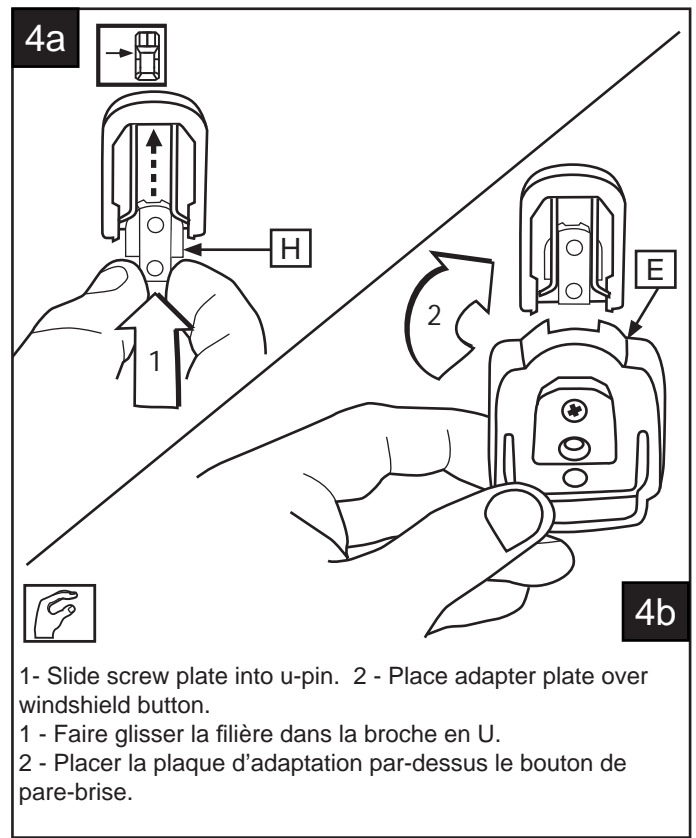
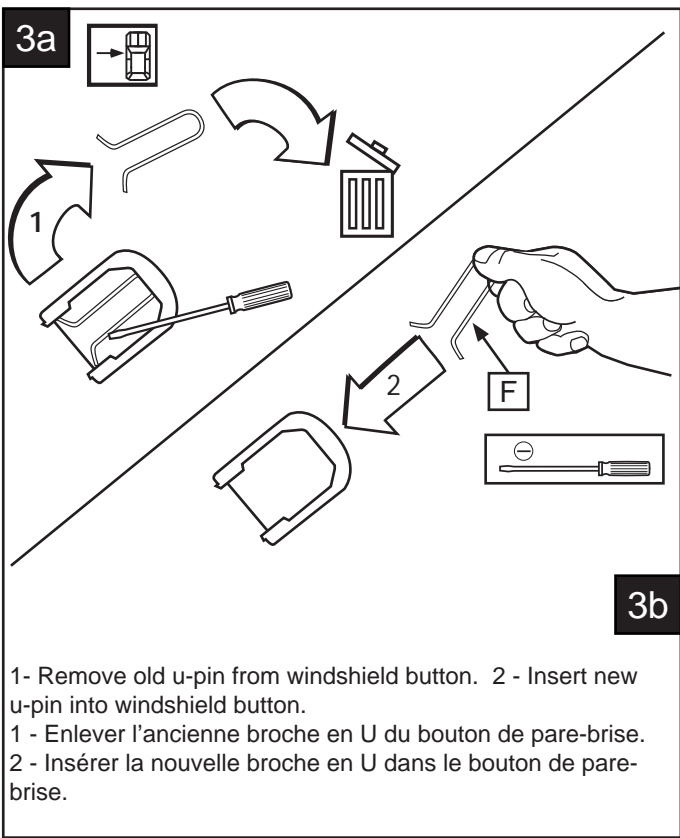
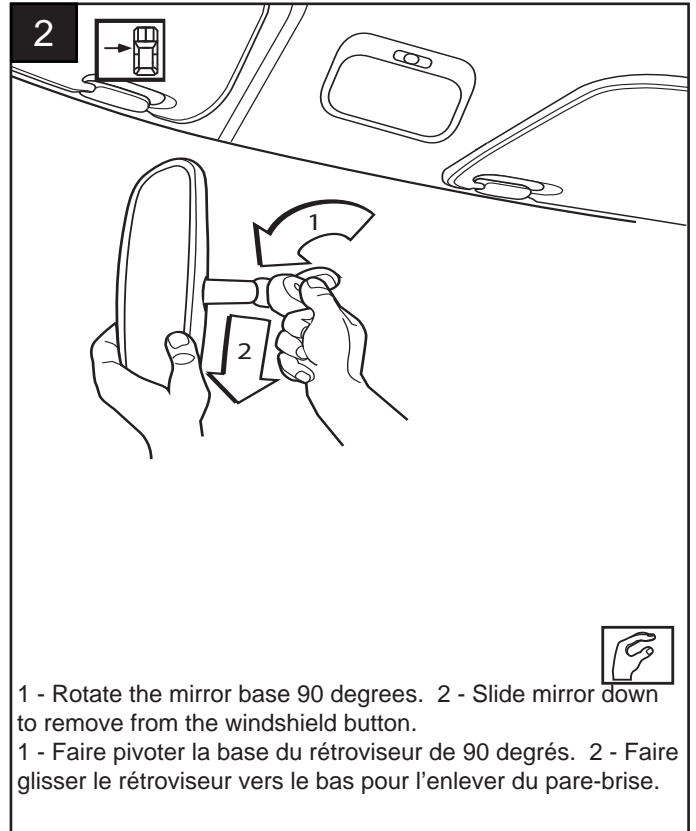
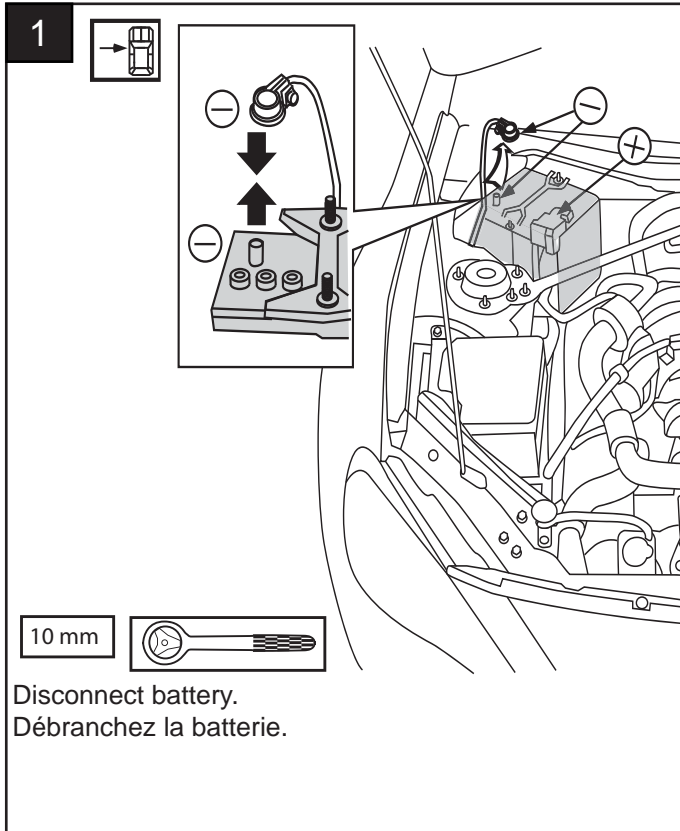
PART NUMBERS  
H501SCA001

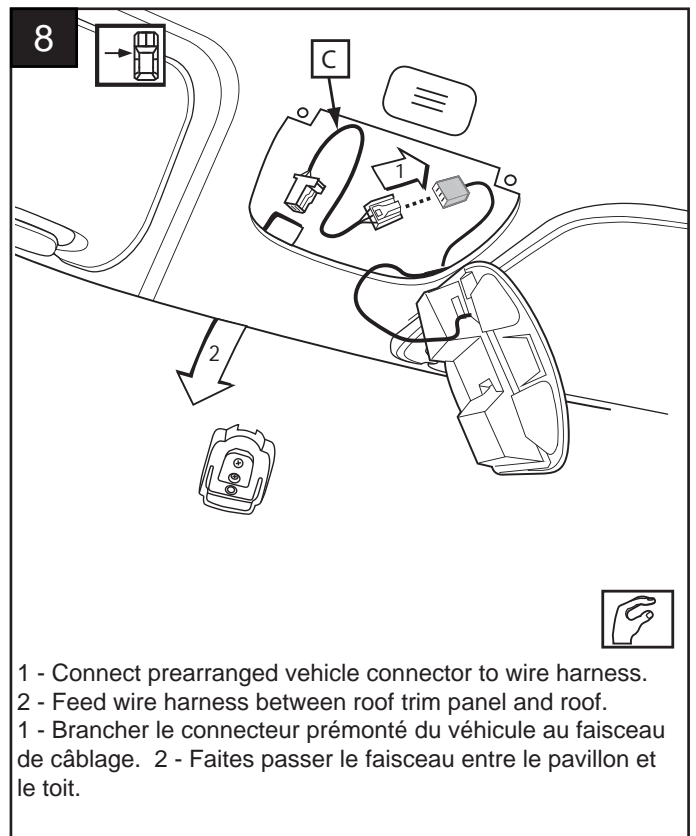
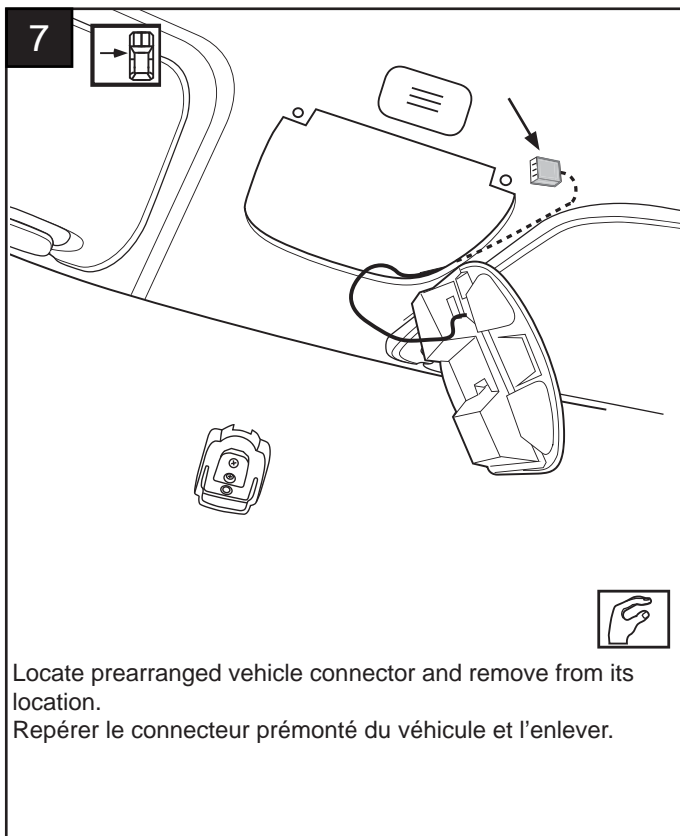
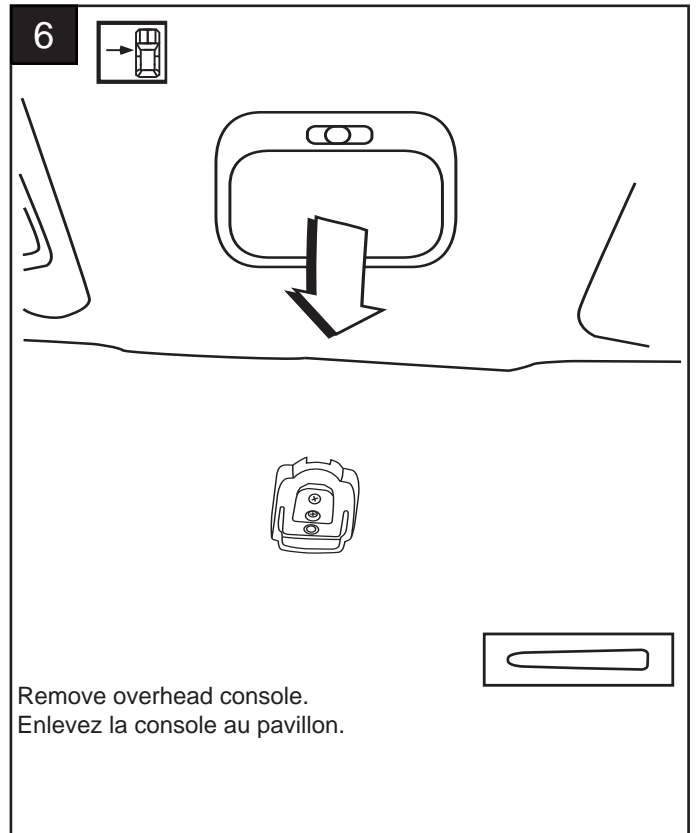
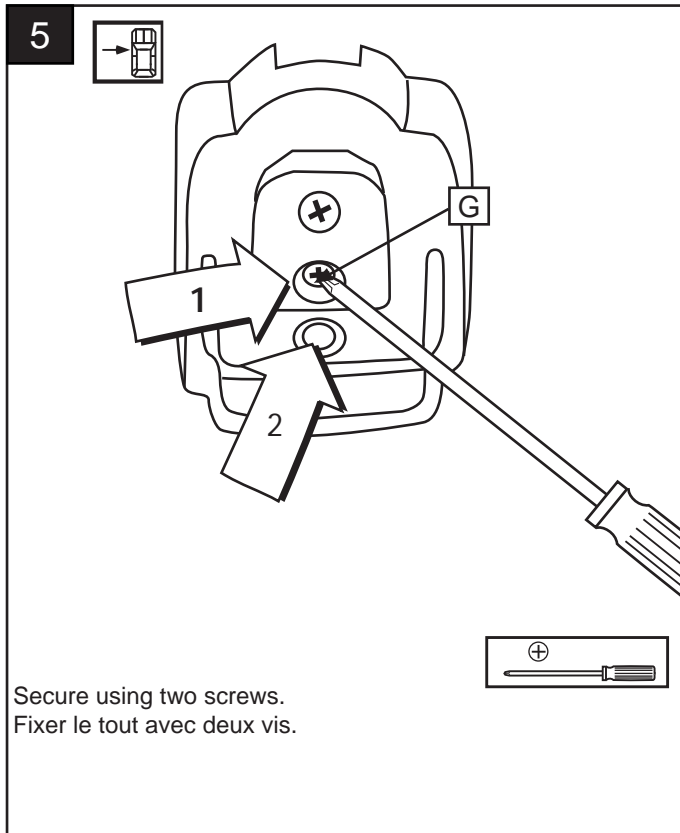
ISSUE  
A

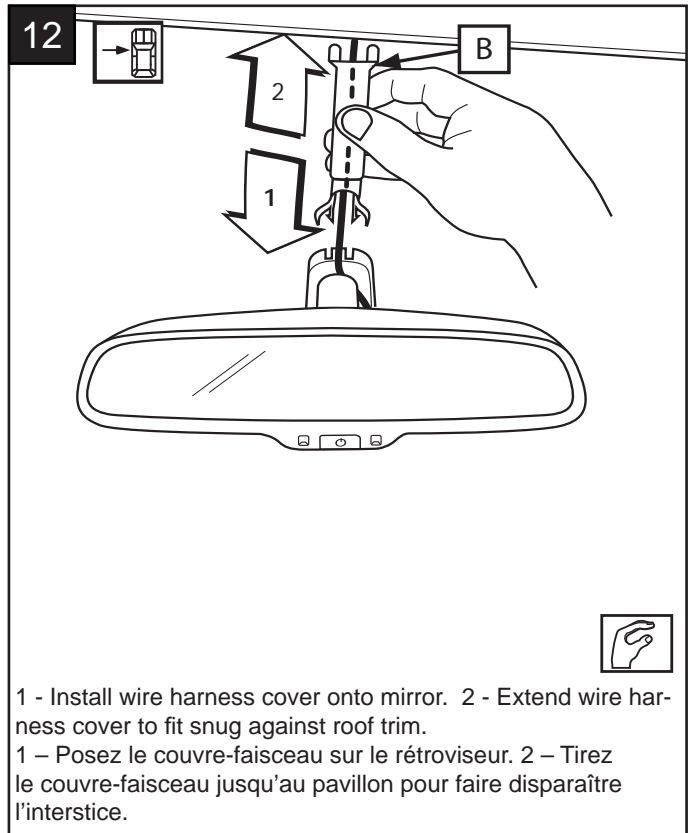
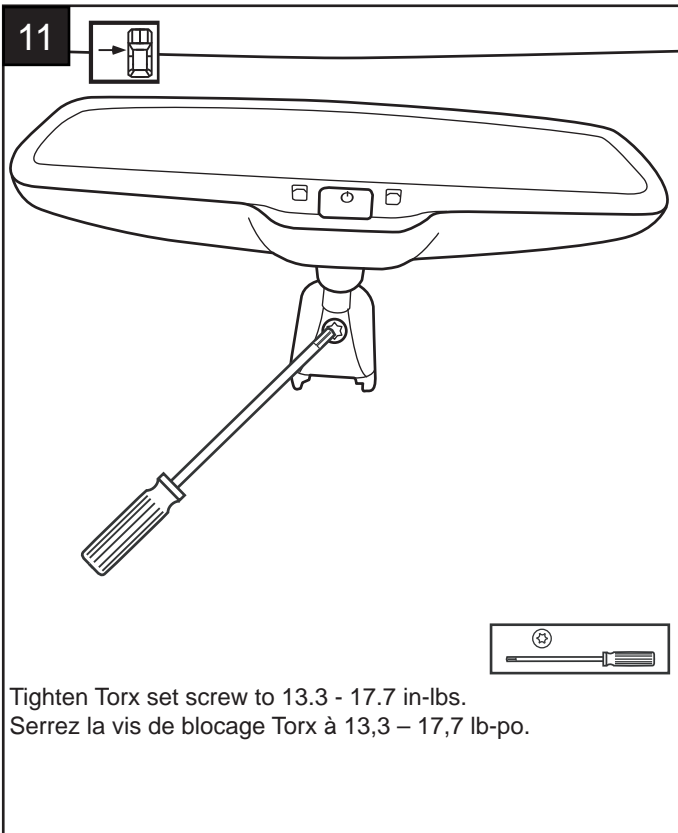
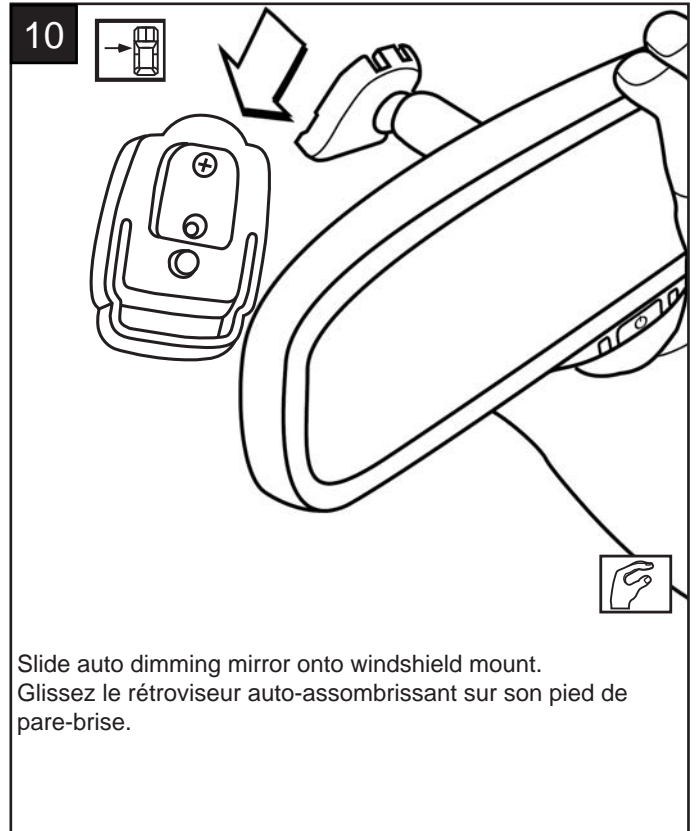
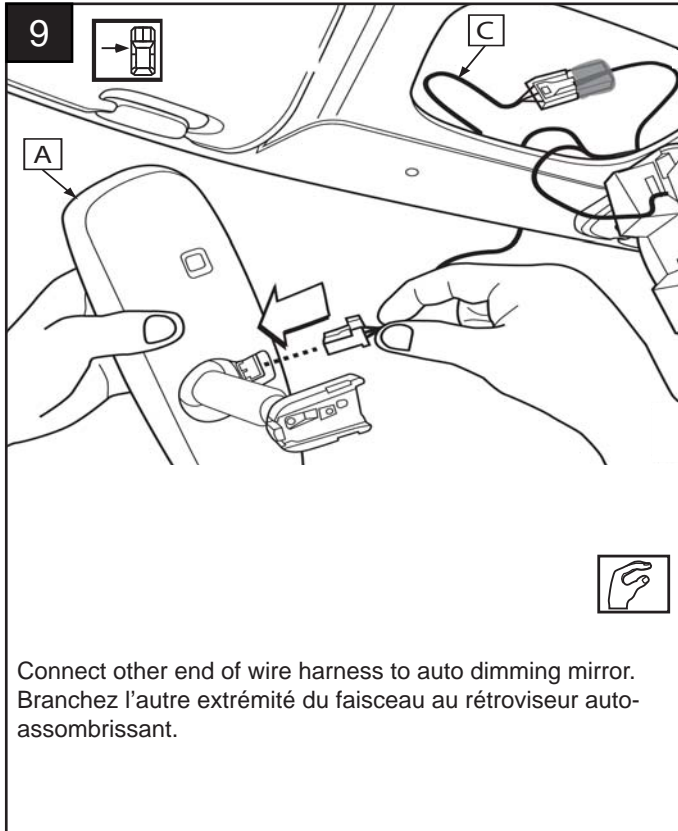
DATE  
09/01/14

**SUBARU OF AMERICA**

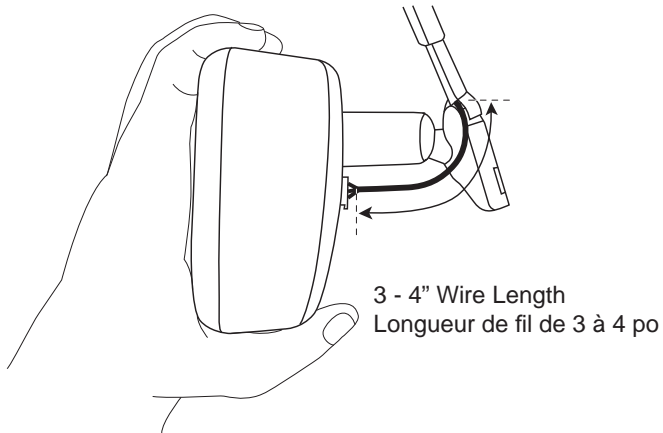
PAGE  
1/6







13

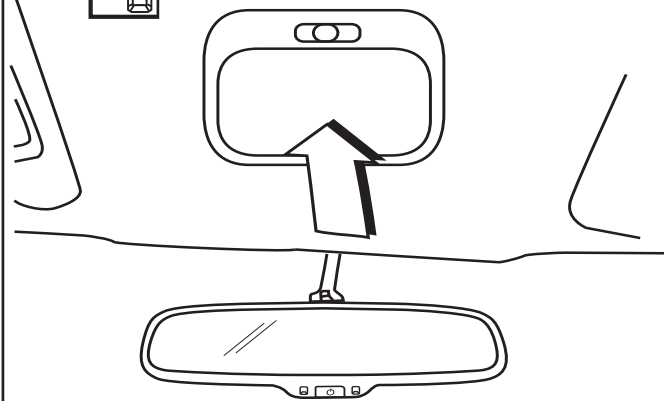


3 - 4" Wire Length  
Longueur de fil de 3 à 4 po



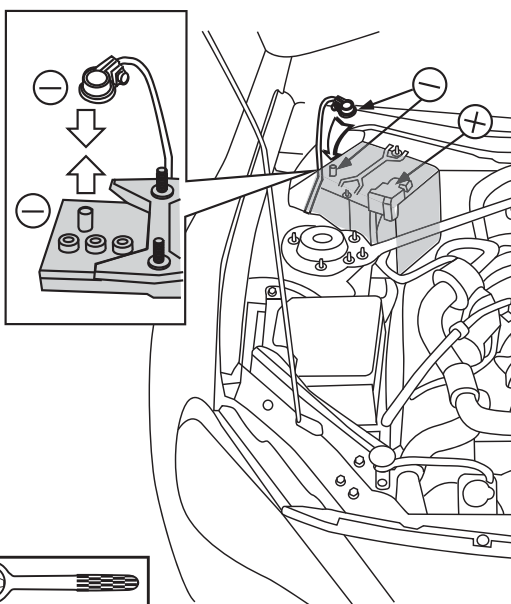
Leave 3 - 4" of wire harness to allow for mirror adjustment.  
Laissez 3 à 4 po de faisceau pour permettre le réglage du rétroviseur.

14

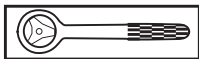


Install overhead console.  
Posez la console au pavillon.

15

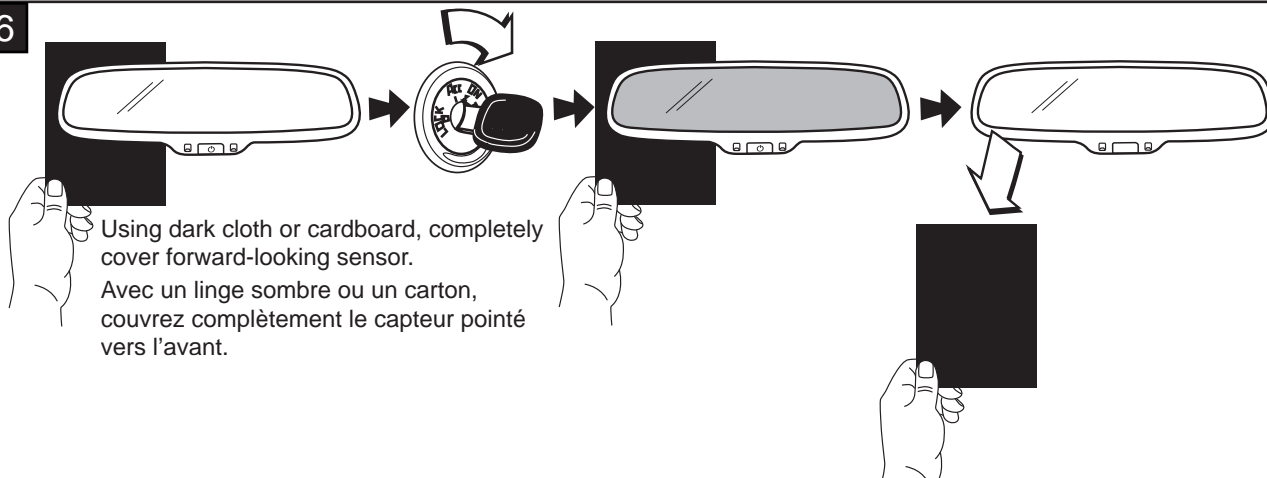


10 mm



Reconnect battery.  
Reconnectez la batterie.

16



17

To calibrate compass reference mirror user guide.  
Pour étalonner la boussole, reportez-vous au manuel du rétro-  
viseur.